



**FIFTY  
WEST**

**OCOEE COMMUNITY REDEVELOPMENT AGENCY**

Ocoee Commission Chambers  
1 N. Bluford Avenue  
Ocoee, Florida

**March 5, 2024**

**AGENDA**

**5:00 PM**

**CRA REGULAR MEETING**

**• CALL TO ORDER**

Roll Call and Determination of Quorum

**• PUBLIC COMMENTS**

**• OLD BUSINESS**

**• NEW BUSINESS**

1. Approval of Minutes of the December 5, 2023, CRA Regular Meeting

**• MISCELLANEOUS**

1. Redevelopment Plan Update
2. South Bluford Avenue Complete Street
3. Annual Report Presentation

**• BOARD COMMENTS**

**• ADJOURNMENT**

**NOTICE:** IN ACCORDANCE WITH FLORIDA STATUTE 286.0105: ANY PERSON WHO DESIRES TO APPEAL ANY DECISION AT THIS MEETING WILL NEED A RECORD OF THE PROCEEDINGS AND FOR THIS PURPOSE MAY NEED TO ENSURE THAT A VERBATIM RECORD OF THE PROCEEDINGS IS MADE WHICH INCLUDES THE TESTIMONY AND EVIDENCE UPON WHICH THE APPEAL IS BASED. IN ACCORDANCE WITH FLORIDA STATUTE 286.26: PERSONS WITH DISABILITIES NEEDING ASSISTANCE TO PARTICIPATE IN ANY OF THESE PROCEEDINGS SHOULD CONTACT THE OFFICE OF THE CITY CLERK, 1 N. BLUFORD AVENUE, OCOEE, FL 34761, (407) 905 -3105, 48 HOURS IN ADVANCE OF THE MEETING.



FIFTY  
WEST

**OCOEE COMMUNITY REDEVELOPMENT AGENCY**

Ocoee Commission Chambers  
1 N. Bluford Avenue  
Ocoee, Florida

**December 5, 2023**

**MINUTES**

**5:00 PM**

**CRA REGULAR MEETING**

**• CALL TO ORDER**

**Chair Johnson** called the Community Redevelopment Agency Board to order at 5:04 PM in the Commission Chambers of City Hall. **City Clerk Sibbitt** called roll and declared a quorum present.

**Roll Call:** Chair Johnson, Vice-Chair Wilsen, Member Firstner, Member Hart, and Member June

**Absent:** Member Kennedy and Member Koovakada

**Also Present:** City Manager Frank, Assistant City Manager Shadrix, Deputy Development Services Director/CRA Administrator Corless, Redevelopment Program Manager Vaca, City Attorney Ardaman, and City Clerk Sibbitt

**• PUBLIC COMMENTS**

No speaker reservation forms were received.

**• OLD BUSINESS - None**

**• NEW BUSINESS**

1. Approval of Minutes of the September 19, 2023, CRA Regular Meeting

**Vice-Chair Wilsen, seconded by Member Firstner, moved to approve the CRA Regular Meeting Minutes of September 19, 2023, as presented. Motion carried 5-0 with Members Kennedy and Koovakada absent.**

2. Election of Officers

A memorandum was provided in the CRA packet which identified the Chair and Vice-Chair for the past seven fiscal years, including the current year. Brief discussion ensued.

**Member Firstner, seconded by Member Hart, moved to nominate Vice-Chair Wilsen as CRA Board Chair. Motion carried 5-0 with Members Kennedy and Koovakada absent.**

**Member Firstner, seconded by Member Hart, moved to nominate Member Kennedy as CRA Board Vice-Chair. Motion carried 5-0 with Members Kennedy and Koovakada absent.**

• **MISCELLANEOUS**

1. Updated Increment Revenue Numbers

**Redevelopment Program Manager Vaca** updated the board on the tax increment revenue, and explained that the revenue will be less than what was proposed when the budget was passed in September. The calculations Orange County used to estimate gross taxable value in November are less than the estimate their staff provided to the City back in June. This calculation adjustment, in addition to an overpayment the County made to the Redevelopment Trust Fund last year, led to the reduction in actual revenue. She further delineated the next steps that will be taken, and indicated that staff will prepare a resolution for the June meeting to formally amend the budget once an audit has been completed.

**Vice-Chair Wilsen** inquired if the change in revenue would have any residual effects on projects. **Redevelopment Program Manager Vaca** addressed her question.

2. Vision Zero Action Plan

**Deputy Development Services Director/CRA Administrator Corless** commented on the increasing bicyclist and pedestrian fatalities nationwide, and remarked on Central Florida being known for having a higher than average number of such fatalities. She explained that beginning last year, the City partnered with MetroPlan Orlando to participate in a program called Vision Zero. She summarized the program and grant funding awarded to MetroPlan by the Safe Streets and Roads for All (SS4A) Program, which is administered by the U.S. Department of Transportation. She further detailed the City's project team, which will be involved in reviewing the City's transportation system and applicable projects and helping with the action plan. She outlined the Vision Zero Key Tasks and how the City is trying to engage the community regarding areas where they have concerns or feel unsafe.

**Member June** detailed a near-incident he recently experienced. He pondered whether bicycles should be mixed with cars and commented about efforts being made for trails. **Member Hart** commented with his support for the Vision Zero program and having a Citywide plan, especially considering the number of people coming to our area and new development. **Deputy Development Services Director/CRA Administrator Corless** addressed their comments and remarked that MetroPlan is paying more than \$100,000 for the City of Ocoee's action plan.

3. Project Updates

**Deputy Development Services Director/CRA Administrator Corless** updated the Board with the current projects.

a) Redevelopment Plan Update – GAI submitted a draft Finding of Necessity report, identifying sufficient deterioration to justify expansion of the CRA to include the West Oaks Mall. Meeting two of sixteen criteria qualifies an area as “being blighted,” and this area meets nine of sixteen. She expects the final report in the next couple of weeks. GAI is also working on addressing the enclaves; then the next steps for the Redevelopment Plan will go to the County.

b) Downtown Finding – A preliminary assessment indicates that the downtown area meets the CRA criteria set forth in F.S. Chapter 163. However, initial conversations with Orange County revealed that the County may be more supportive of expanding the existing CRA versus creating

a new district. Recent requests from other municipalities to create new districts have not moved forward. Staff will be working with a consultant and meeting with Orange County for further discussion, and hopefully will bring back a positive update at the March meeting.

c) Maguire Road Phase 5 – Staff will be finalizing the scope of work in December with the engineering consultant; work will feasibly start in January to update the documents for the Phase 5 section of road for the area north of Maine Street to Story Road.

d) Wellness Park Restroom – Staff expects the design to be 100% complete by end of the year, with anticipated bidding in late February to early March 2024. The budget is estimated at \$195,000, which is less than what is budgeted for the project. **Deputy Development Services Director/CRA Administrator Corless** summarized the facility’s features and branding.

e) S. Bluford Avenue Complete Street Project – The project is currently at 60% Final Engineering and will soon move forward for permitting through St. Johns River Water Management District. **Deputy Development Services Director/CRA Administrator Corless** detailed the CRA components of the project budget and explained staff’s recommendation to break the project into three phases. Phase I would comprise the section from Old Winter Garden Road to SR 50, Phase II would encompass the area from SR 50 to Geneva Street, and Phase III would include Geneva Street to Delaware Street. She further explained the premise for determining the phases and the estimated cost for Phase I, for which funds are available. Discussion ensued.

**Deputy Development Services Director/CRA Administrator Corless** addressed concerns from Chair Johnson regarding Delaware Street, and explained that the CRA board cannot take any action north of Geneva. However, because this is a joint project between the CRA and the City, she will put together a presentation that outlines the entire process, including working with the City on their portion from Geneva to Delaware. She informed the board that the next regularly scheduled meeting is March 5<sup>th</sup>, however, she also noted that staff will work with the City Manager’s office to come up with a plan regarding a workshop for the S. Bluford Avenue Complete Street Project.

• **BOARD COMMENTS** - None

• **ADJOURNMENT**

The meeting was adjourned at 5:45 PM

Attest:

APPROVED:

\_\_\_\_\_  
Melanie Sibbitt, Secretary

\_\_\_\_\_  
Chair



**FIFTY  
WEST**

## **MEMORANDUM**

**TO: COMMUNITY REDEVELOPMENT AGENCY BOARD**  
**FROM: GINGER CORLESS, CRA ADMINISTRATOR**  
**CAROLINA VACA, REDEVELOPMENT PROGRAM MANAGER**  
**DATE: 2/20/2024**  
**RE: SOUTH BLUFORD AVENUE COMPLETE STREET PROJECT**

---

### **OVERVIEW**

The South Bluford Avenue Complete Street project spans from Delaware Street south to Old Winter Garden Road and is a joint effort between the city and the Community Redevelopment Agency (CRA). This project will continue the streetscape improvements that began with the 2018 Bluford Avenue Reconstruction from Silver Star Road to Delaware Street. One of the driving factors for this project is the need to improve pedestrian connectivity and safety between Old Winter Garden Road and the city's Downtown core. The addition of multi-use pathways, improved pedestrian crossings, and traffic calming measures will provide a safe route for students in nearby apartments to walk or bike to school. The project also aims to strengthen public infrastructure and includes the relocation of existing water and sewer utilities as well as the addition of reclaimed water and sanitary sewer to the corridor which will increase the CRA's ability to recruit and retain economic growth. Other enhancements include landscape/hardscape improvements, street and pedestrian level lighting, and undergrounding of overhead utilities along the corridor.

The project is broken down into three sections. Sections 1 and 2, both within the geographic boundary of the CRA, span from Old Winter Garden Road north to SR 50 and from SR 50 to Geneva Street, respectively. As part of the CRA, work in these sections can be funded—in whole or in part—from the Redevelopment Trust Fund. Section 3, which lies outside of the CRA boundary, spans from Geneva Street north to Delaware Street and will ne to be funded by other city, non-CRA, funds.

### **CRITICAL TASKS, OBSTACLES, AND ADVANTAGES**

#### SECTION 1 – OLD WINTER GARDEN TO SR 50

The geotechnical report completed in September 2023 indicated that Section 1 has critically poor pavement conditions that will require the roadway section to be completely reconstructed, rather than simply milled and repaved as envisioned when initiating this project. However, although a costlier process, reconstruction of this roadway section will allow for reprofiling of the road which will make the surface drainage work better. Other advantages of Section 1 include that there is no significant utility or drainage work being done here and that there is sufficient right-of-way already available, so costly acquisitions are not needed. Overhead utilities are also set back from the roadway and will not need to be undergrounded in this Section. Additional work in Section 1 includes some sidewalk additions and replacements, replacement of the gore area with a raised median, landscaping, and street lighting. It should be noted that some of the sidewalks on the

eastern part of this section have already been installed as part of the Healthy West Orange Wellness Park construction.

## SECTION 2 – SR 50 TO GENEVA

The same September 2023 geotechnical report indicated that the segment from Maine Street to Geneva Street has a high water table, meaning that a costlier asphaltic base is needed here to compensate for this. Additionally, this Section includes the most utility and storm sewer improvements which, coupled with the high water table, means that a significant portion of this roadway will need to be reconstructed, as well. Another critical factor in this Section is that it includes two roundabouts at Maine Street and Geneva Street which both require right-of-way acquisitions at these intersections. In addition to these, 14 easements need to be acquired to accommodate the trail width and landscape and the property for the lift station in this Section will also need to be acquired. Additional work in this Section includes the conversion from a flush-shoulder road (rural section) to a curbed road (urban section), addition of a 10' multipurpose path on the east and 6' sidewalks on the west, landscaping, and the undergrounding of overhead utilities. Lastly, a new culvert structure will be to be installed for the ditch to provide safe pedestrian passage.

## SECTION 3 – GENEVA TO DELAWARE

The work for this Section is similar to Section 1 but includes more utility work, such as installation of reclaim water and sewer, and the undergrounding of overhead utility lines. However, due to the fact that no geotechnical report and no design work beyond the initial concept layout has been completed for this Section, it has the greatest time constraint of all three sections. Additionally, it is unknown whether the underlying base material is still suitable or whether it will require a costly reconstruction. Therefore, it is difficult to get a proper price estimate at this time until the geotechnical report is completed.

## **COST ESTIMATE(S) AND FUNDING**

### BACKGROUND

The Conceptual Design Plans for this project were completed in 2019 by GAI Consultants Community Solutions Group. The CRA expensed \$25,390 for GAI to develop the Conceptual Design and received from them at the time a construction cost estimate of \$2.9 million. Since 2019, we have seen construction costs skyrocket by at least 35%.

Since then, the plans have evolved and been revised to include advanced utility work and the addition of two roundabouts at Maine and Geneva. While the original plans did not call for any roundabouts, they were added as a safer alternative to traffic signals and to discourage semi-trucks from traveling on Bluford, encouraging them to travel on Maguire Road instead. In 2021, CPH Inc—now CPH Consulting, LLC—was awarded the contract (RFQ #21-003) for engineering and design services for this project and the city and CRA expensed a total of \$290,952.59 for them to complete the Preliminary Engineering Documents for the full corridor from Old Winter Garden Road to Delaware Street.

Following the completion of the Preliminary Engineering Documents, the city and CRA encumbered \$12,590 and \$728,198.64, respectively, in 2023 for CPH to complete the Final Design and Engineering Documents for the CRA portion of the project from Old Winter

Garden to Geneva. These documents are currently 80% complete. Due to a lack of city (or non-CRA) funds needed at the time to complete final engineering documents for the remaining portion from Geneva to Delaware, the final engineering for this portion has just been initiated. The cost for completing these final engineering documents is \$341,587.93. This fiscal year, Public Works budgeted \$1,000,000 for this project and a change order for the final engineering has been initiated using these funds.

CONSTRUCTION COST ESTIMATES

CPH has provided the following construction cost estimates for each of the three Sections:

Section 1 - Old Winter Garden to SR 50 (CRA)	
Roadway Subtotal	\$2,105,767.12
Landscape Subtotal	\$246,877.95
<b>GRAND TOTAL</b>	<b>\$2,352,645.07</b>

Section 2 – SR 50 to Geneva Street (CRA)	
Roadway Subtotal	\$6,620,421.46
Landscape Subtotal	\$431,962.03
Utilities Subtotal	\$3,942,108.50
<b>GRAND TOTAL</b>	<b>\$10,994,491.99</b>

The total cost for both CRA Sections is **\$13,347,137.06**

Section 3 – Geneva to Delaware (City)	
Roadway Subtotal	\$2,413,242.61
Landscape Subtotal	\$180,732.84
Utilities Subtotal	\$1,046,310.00
<b>GRAND TOTAL</b>	<b>\$3,640,285.45</b>

And the following cost estimate for the construction of all the sections concurrently:

Old Winter Garden to Delaware	
Roadway Subtotal	\$11,531,422.03
Landscape Subtotal	\$875,274.14
Utilities Subtotal	\$5,240,619.00
<b>GRAND TOTAL</b>	<b>\$17,647,315.17</b>

It should be noted that the estimate for Section 3 assumes that the underlying base material is suitable and the roadway will not need to be reconstructed. If the geotechnical report proves otherwise, the overall costs will escalate. This assumption was made based on the geotechnical information available on the Geneva roundabout. It should also be noted that the above construction costs do not include the cost of undergrounding the utilities, of the street lights, or of the right of way acquisition.

CONSTRUCTION PHASE FUNDING

The CRA currently has, in their Fiscal Year 2024 budget, a total of **\$5,225,447** budgeted for construction of this project. This amount includes \$750,000 in grant funds from the Foundation for a Healthier West Orange to complete the South Bluford Trail. The Public Works department has, in their Fiscal Year 2024 budget, \$1,000,000 budgeted for construction of this project and \$1,400,000 specifically for undergrounding utilities in the City's portion.

FUNDING FOR CRA SECTION(S)		FUNDING FOR CITY SECTION	
Total Cost for CRA Sections <i>not including utility conversion and easements</i>	\$13,347,137	Total Cost for City Section <i>not including utility conversion and easements</i>	\$3,640,285
Current Available Funding	\$5,225,447	Current Available Funding	\$1,000,000
Funding Still Needed	<b>\$8,121,690</b>	Funding Still Needed	<b>\$2,640,285</b>

In Fiscal Year 2023 and Fiscal Year 2024, the CRA received approximately \$1.3 million and \$1.7 million, respectively, in tax increment revenue, after accounting for personnel and operating expenses. This is an average of \$1.5 million per year and is only expected to grow. The CRA Board could, at their discretion, pledge to apply the full total of this increment revenue to this project over the next two or three years to help expedite the timeline.

**STAFF RECOMENDATIONS**

Based on the available funding and the conditions of each Section, staff recommends taking a phased approach starting with Section 1 from Old Winter Garden Road to SR 50. With an estimated construction cost of \$2,352,645.07, the CRA has sufficient funds to complete construction of this segment now. Additionally, due to the fact that final design and engineering still need to be completed for Section 3, Section 1 is the only one that is currently both fully funded *and* on schedule to move forward. This Section has the poorest pavement conditions and starting with it will continue the improvements that were started with the Wellness Park construction, making the southern end of the corridor look complete.

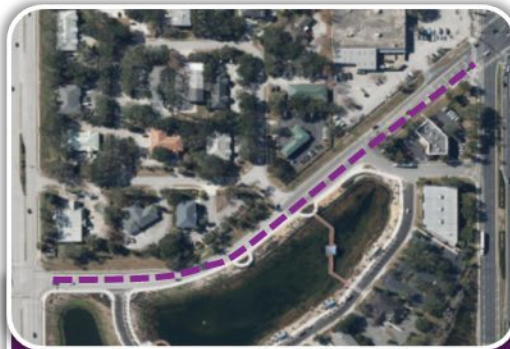
Staff also recommends starting with this section while the final engineering for Section 3 is completed to allow more time for additional funds to be secured for Sections 2 and 3. If the City can secure \$3,640,285.45 in fiscal year 2025, Section 3 can move forward. With the rise in construction costs observed in recent years, waiting until final design and funds are available to construct all three Sections concurrently could result in higher overall costs.

If you have any questions about this information prior to the March 5 CRA Board Meeting, please do not hesitate to contact Ginger Corless by email at [vcorless@ocoe.org](mailto:vcorless@ocoe.org) or by phone at 407-608-0401.

ATTACHMENTS

- Summary Graphic
- CPH Cost Estimates for Sections 1, 2, 3, and combined
- CPH Timelines for Sections 1, 2, 3, and combined

# S. BLUFORD MEMO SUMMARY



## Section 1

### Old Winter Garden to SR 50

- Has the poorest existing road conditions of the 3 sections
- 1 easement/acquisition needed
- Sidewalks on East side constructed with Wellness Park
- No undergrounding of overhead utilities required
- Estimated construction cost is **\$2,352,645.07**



## Section 2

### SR 50 to Geneva

- Requires significant roadway reconstruction due to a high water table and complex utility work required
- Includes two roundabouts
- 10 easements/acquisitions needed
- Has most crucial need for sidewalks due to school traffic from Oasis apartments
- Estimated construction cost is **\$10,994,491.99**
- This cost does not include the undergrounding of overhead utilities or easements needed here



## Section 3

### Geneva to Delaware (City's Portion)

- Final engineering has not been completed (was started February 2024)
- Similar to Section 1 but includes more utility work like installation of reclaim water and sewer
- No geotechnical report has been completed to determine viability of underlying material
- 3 easements/acquisitions needed
- Estimated construction cost is **\$3,640,285.45**
- This cost does not include the undergrounding of overhead utilities or easements needed here



**ESTIMATE OF PROBABLE CONSTRUCTION COST**

**BLUFORD AVENUE  
CITY OF OCOEE, FLORIDA**

**Phase 1 - Old Winter Garden Road to SR-50**

ESTIMATED BY AM  
DATE: 12/18/2023  
CHECKED BY: JML

ITEM NUMBER	FOOT PAY ITEM NUMBER	ITEM DESCRIPTION	UNIT	QUANTITY	UNIT COST	TOTAL COST		
<b>Roadway</b>								
1	101	1		MOBILIZATION	LS	1	\$194,431.00	\$194,431.00
2	102	1		MAINTENANCE OF TRAFFIC	LS	1	\$92,586.19	\$92,586.19
3	104	10	3	SEDIMENT BARRIER	LF	2637	\$7.03	\$18,538.11
4	104	18		INLET PROTECTION SYSTEM	EA	12	\$229.22	\$2,750.64
5	110	1	1	CLEARING & GRUBBING	AC	2.50	\$177,983.47	\$444,958.68
6	110	4	10	REMOVAL OF EXISTING CONCRETE	SY	1093	\$40.37	\$44,124.41
7	120	1		EARTHWORK	LS	1	\$10,000.00	\$10,000.00
8	160	4		TYPE B STABILIZATION (LBR40)(12")	SY	7810	\$12.49	\$97,546.90
9	285	709		OPTIONAL BASE GROUP 09 CRUSHED CONC. (10")	SY	7146	\$39.56	\$282,695.76
10	334	1	53	SUPERPAVE ASPHALT CONC. TRAFFIC C, 3"	TN	1179	\$209.42	\$246,906.18
11	337	7	83	ASPHALT CONC. FRICTION COURSE, TRAFFIC C, 1 1/2" (FC-12.5, PG 76-22)	TN	589	\$211.62	\$124,644.18
12	425	1	335	INLETS, CURB, TYPE P-3, PARTIAL	EA	3	\$8,130.68	\$24,392.04
13	425	5		MANHOLE, ADJUST	EA	1	\$3,601.79	\$3,601.79
14	425	6		VALVE BOX, ADJUST	EA	10	\$1,500.00	\$15,000.00
15	520	1	10	CONCRETE CURB & GUTTER, TYPE F	LF	1190	\$55.45	\$65,985.50
16	520	1	7	CONCRETE CURB & GUTTER, TYPE E	LF	142	\$55.45	\$7,873.90
17	520	2	1	CONCRETE CURB, TYPE A	LF	553	\$54.06	\$29,895.18
18	520	5	11	TRAFFIC SEPARATOR CONCRETE - TYPE I, 4' WIDE	LF	223	\$145.22	\$32,384.06
19	522	1		CONCRETE, SIDEWALK, 4" THICK	SY	1127	\$107.52	\$121,175.04
20	522	2		CONCRETE, DRIVEWAYS/RAMPS, 6" THICK	SY	51	\$145.20	\$7,405.20
21	527	2		DETECTABLE WARNINGS	SF	55	\$47.28	\$2,600.40
22	706	1		RAISED PAVEMENT MARKER (RPM) YELLOW)	EA	50	\$6.69	\$334.50
23	711	11	123	THERMOPLASTIC, STD, WHITE, SOLID, 12"	LF	263	\$4.26	\$1,120.38
24	711	11	125	THERMOPLASTIC, STD, SOLID, WHITE, 24"	LF	156	\$7.84	\$1,223.04
25	711	11	160	THERMOPLASTIC, STD, WHITE, MESSAGE OR SYMBOL	EA	7	\$685.21	\$4,796.47
26	711	11	170	THERMOPLASTIC, STD, WHITE, ARROW	EA	15	\$685.21	\$10,278.15
27	711	15	101	THERMOPLASTIC, STD - OP, WHITE, SOLID, 6"	GM	0.65	\$25,647.27	\$16,670.73
28	711	16	131	THERMOPLASTIC, STANDARD-OTHER SURFACES, WHITE, SKIP, 6", 10-30 SKIP OR 3-9 LANE DROP	GM	0.0295	\$4,061.59	\$119.82
29	711	16	201	THERMOPLASTIC, STD - OP, YELLOW, SOLID, 6"	GM	0.40	\$25,670.60	\$10,268.24
						<b>Contingency (10%)</b>	<b>\$191,430.65</b>	
						<b>Roadway Subtotal</b>	<b>\$2,105,737.12</b>	
<b>Landscape</b>								
30				MUSKOGEE CRAPE MYRTLE; LAGERSTROEMIA INDICA 'MUSKOGEE'; 100 GAL., 4" CAL., 8" MIN. HT., STD. TRUNK	EA	12	\$1,031.00	\$12,372.00
31				NATCHEZ CRAPE MYRTLE; LAGERSTROEMIA INDICA 'NATCHEZ'; 100 GAL., 4" CAL., 8" MIN. HT., STD. TRUNK	EA	6	\$1,031.00	\$6,186.00
32				SWEETBAY MAGNOLIA (N); MAGNOLIA VIRGINIANA; 65 GAL., 3.5" CAL., 8" MIN. HT., STD. TRUNK	EA	12	\$1,375.00	\$16,500.00
33				LIVE OAK (N); QUERCUS VIRGINIANA; 100 GAL., 4" CAL., 10" MIN. HT., 6" SPRD.	EA	4	\$2,100.00	\$8,400.00
34				SYLVESTER PALM; PHOENIX SYLVESTRIS 16' OA, FULL SYMMETRICAL HEADS, CLEAN STRAIGHT TRUNKS, CLASSIC CUT	EA	3	\$3,000.00	\$9,000.00
35				PETITE PINK OLEANDER; NERIUM OLEANDER 'PETITE PINK'; 3 GAL., 18" HT., 12" SPRD., 30" O.C.	EA	76	\$20.00	\$1,520.00
36				DWARF FIREBUSH; HAMELIA PATENS; 3 GAL., 18" HT., 9" SPRD., 30" OC	EA	363	\$20.00	\$7,260.00
37				MUHLI GRASS (N); MUHLENBERIA CAPILLARIS; 3 GAL., 15" MIN. HT., 10" SPRD., 36" O.C.	EA	378	\$14.50	\$5,481.00
38				ELLIOT'S LOVE GRASS; ERAGROSTIS ELLIOTTI; 3 GAL., 8" HT., 8" SPRD., 24" OC	EA	416	\$14.50	\$6,032.00
39				BLUE DAZE; EVOLVULUS GLOMERATUS; 1 GAL., 4" HT., 6" SPRD., 15" O.C.	EA	344	\$8.50	\$2,924.00
40				VARIGATED CONFEDERATE JASMINE; TRACHELOSPERUM JASMINOIDES 'VARIEGATUM' 3 GAL., 12" HT., 12" SPRD., BUSH FORM 24" O.C.	EA	816	\$15.00	\$12,240.00
41				ARGENTINE BAHIA SOD; PASPALUM NOTATUM 'ARGENTINE'; SOLID SOD, CONTRACTOR TO VERIFY QTY.	SF	44215	\$1.60	\$70,744.00
42				MULCH 3" DEPTH, SHREDDED HARDWOOD	CY	115	\$75.90	\$8,728.50
43				ROOT BARRIER, DEEP ROOT UB24	LF	703	\$20.00	\$14,060.00
44				BLACK MEXICAN BEACH PEBBLES; 3'-5" OVER NON-WOVEN GEOTEXTILE FABRIC	SF	207	\$19.00	\$3,933.00
45				IRRIGATION	LS	1	\$39,054.00	\$39,054.00
						<b>Contingency (10%)</b>	<b>\$22,443.45</b>	
						<b>Landscape Subtotal</b>	<b>\$246,877.95</b>	
						<b>GRAND TOTAL</b>	<b>\$2,352,615.07</b>	



ESTIMATE OF PROBABLE CONSTRUCTION COST

BLUFORD AVENUE
CITY OF OCOCHEE, FLORIDA

Phase 2 - SR-50 to Geneva Street

ESTIMATED BY AM
DATE: 12/18/2023
CHECKED BY: JML

Table with columns: ITEM NUMBER, FDOT PAY ITEM NUMBER, ITEM DESCRIPTION, UNIT, QUANTITY, UNIT COST, TOTAL COST. Includes sections for Roadway, Landscape, and Utilities.



**ESTIMATE OF PROBABLE CONSTRUCTION COST**

**BLUFORD AVENUE  
CITY OF OCOEE, FLORIDA**

**Phase 3 - Geneva Street to Delaware Street**

ESTIMATED BY AM  
DATE: 12/18/2023  
CHECKED BY: JML

ITEM NUMBER	FOOT PAY ITEM NUMBER	ITEM DESCRIPTION	UNIT	QUANTITY	UNIT COST	TOTAL COST		
<b>Roadway</b>								
1	101	1		MOBILIZATION	LS	1	\$224,708.98	\$224,708.98
2	102	1		MAINTENANCE OF TRAFFIC	LS	1	\$133,755.34	\$133,755.34
3	104	10	3	SEDIMENT BARRIER	LF	3298	\$3.30	\$10,883.40
4	104	18		INLET PROTECTION SYSTEM	EA	25	\$229.22	\$5,730.50
5	110	1	1	CLEARING & GRUBBING	AC	1.30	\$177,983.47	\$231,378.51
6	110	4	10	REMOVAL OF EXISTING CONCRETE	SY	2538	\$40.37	\$102,459.06
7	120	1		EARTHWORK	LS	1	\$10,000.00	\$10,000.00
8	327	70	6	MILLING EXISTING ASPHALT PAVEMENT, 1 1/2" AVG DEPTH	SY	5614	\$5.69	\$31,943.66
9	337	7	83	ASPHALT CONC. FRICTION COURSE, TRAFFIC C, 1 1/2" (FC-12.5, PG 76-22)	TN	464	\$211.62	\$98,191.68
10	425	1	201	INLETS, CURB, TYPE 9, <10'	EA	6	\$10,379.44	\$62,276.64
11	425	1	205	INLETS, CURB, TYPE 9, PARTIAL	EA	19	\$11,450.67	\$217,562.73
12	430	175	118	PIPE CULVERT, OPT MAT'L, ROUND, 18" S/CD	LF	513	\$234.54	\$120,319.02
13	520	1	10	CONCRETE CURB & GUTTER, TYPE F	LF	3649	\$57.59	\$210,145.91
14	520	2	4	CONCRETE CURB, TYPE D	LF	361	\$49.15	\$17,743.15
15	522	1		CONCRETE, SIDEWALK, 4" THICK	SY	3181	\$107.52	\$342,021.12
16	522	2		CONCRETE, DRIVEWAYS/RAMPS, 6" THICK	SY	831	\$145.20	\$120,661.20
17	527	2		DETECTABLE WARNINGS	SF	450	\$47.28	\$21,277.60
18	700	1	11	SINGLE POST SIGN, F&I, <12SF	AS	10	\$943.96	\$9,439.60
19	700	1	60	SINGLE POST SIGN, REMOVE	AS	10	\$86.70	\$866.70
20	706	1		RAISED PAVEMENT MARKER (RPM) YELLOW	EA	88	\$5.73	\$504.24
21	711	11	123	THERMOPLASTIC, STD, WHITE, SOLID, 12"	LF	500	\$4.26	\$2,130.00
22	711	11	125	THERMOPLASTIC, STD, SOLID, WHITE, 24"	LF	377	\$7.84	\$2,955.68
23	711	11	224	THERMOPLASTIC, STD, YELLOW, SOLID, 18"	LF	38	\$6.27	\$238.26
24	711	15	101	THERMOPLASTIC, STD - OP, WHITE, SOLID, 6"	GM	0.66	\$25,647.27	\$16,927.20
25	711	16	201	THERMOPLASTIC, STD - OP, YELLOW, SOLID, 6"	GM	0.66	\$25,670.60	\$16,916.93
						<b>Contingency (20%)</b>	<b>\$402,207.10</b>	
						<b>Roadway Subtotal</b>	<b>\$2,413,242.61</b>	
<b>Landscape</b>								
26				SABAL PALM; SABAL PALMETTO; REFER TO PLAN FOR CT. (10'-20'); BOOTED CLEAN STRAIGHT TRUNKS; REGEN HEADS	EA	3	\$495.00	\$1,485.00
27				LITTLE GEM MAGNOLIA, MAGNOLIA GRANDIFLORA/LITTLE GEM; 100 GAL., 4" CAL., 8' MIN. HT.	EA	3	\$1,375.00	\$4,125.00
28				CARNAVON GORGE FAN PALM, LIVISTONA NITIDA, 16" O.A., FL#1, CLEAN STRAIGHT HEADS	EA	3	\$1,100.00	\$3,300.00
29				LILY OF THE NILE, AGAPANTHUS AFRICANUS, 1 GAL., FULL, 3 PPP, 24" OC	EA	928	\$19.25	\$17,864.00
30				RADICANS GARDENIA, GARDENIA JASMINOIDES 'RADICANS'; 3 GAL., 7" MIN. HT., 18" OC	EA	292	\$20.00	\$5,840.00
31				DWARF YAUPON HOLLY (N); ILEX VOMITORIA; 3 GAL., 7" HT., 14" SPRD., 30" O.C.	EA	119	\$12.00	\$1,428.00
32				MAUI RED IXORA; IXORA MAUI; 3 GAL., 15" HT., 12" SPRD., 36" O.C.	EA	57	\$16.50	\$940.50
33				SIMPSON'S STOPPER (N); MYRCIANTHES FRAGRANS; 3 GAL., 18" HT., 12" SPRD., 36" O.C.	EA	95	\$14.50	\$1,377.50
34				BLACK-EYED SUSAN; RUDBECKIA HIRTA; 1 GAL., FULL/DENSE, 18" O.C.	EA	252	\$8.00	\$2,016.00
35				WALTER'S VIBURNUM; VIRBURNUM OBOVATUM; 3 GAL., 18" HT., 12" SPRD., 36" O.C.	EA	251	\$14.50	\$3,639.50
36				COONTIE; ZAMIA PUMILA; 3 GAL., 15" HT., 10" SPRD., 36" O.C.	EA	355	\$35.00	\$12,425.00
37				ARGENTINE BAHIA SOD; PASPALUM NOTATUM 'ARGENTINE'; SOLID SOD, CONTRACTOR TO VERIFY QTY.	SF	24,533	\$1.60	\$39,252.80
38				ROOT BARRIER; DEEP ROOT UB24	LF	743	\$10.00	\$7,430.00
39				MULCH, 3" DEPTH SHREDDED HARDWOOD	CY	86	\$75.90	\$6,527.40
40				IRRIGATION	LS	1	\$42,960.00	\$42,960.00
						<b>Contingency (20%)</b>	<b>\$30,122.14</b>	
						<b>Landscape Subtotal</b>	<b>\$180,732.84</b>	
<b>Utilities</b>								
41				FURNISH AND INSTALL 8" RWM	LF	1525	\$225.00	\$343,125.00
42				FURNISH AND INSTALL 8" 11.25 DEGREE BENDS	EA	4	\$600.00	\$2,400.00
43				FURNISH AND INSTALL 8" 45 DEGREE BENDS	EA	8	\$600.00	\$4,800.00
44				CONNECT TO EXISTING 8" RWM	EA	2	\$300.00	\$600.00
45				FURNISH AND INSTALL 8" GRAVITY MAIN	LF	1520	\$300.00	\$456,000.00
46				FURNISH AND INSTALL MANHOLE (>8FT DEPTH)	EA	5	\$12,000.00	\$60,000.00
47				CORE DRILL EXISING MANHOLE	EA	1	\$5,000.00	\$5,000.00
						<b>Contingency (20%)</b>	<b>\$174,385.00</b>	
						<b>UTILITIES SUB-TOTAL</b>	<b>\$1,046,310.00</b>	
						<b>GRAND TOTAL</b>	<b>\$3,640,285.45</b>	



## ESTIMATE OF PROBABLE CONSTRUCTION COST

BLUFORD AVENUE  
CITY OF OCOEE, FLORIDA

Old Winter Garden Road to Delaware Street

ESTIMATED BY AM  
DATE: 12/18/2023  
CHECKED BY: JML

ITEM NUMBER	FOOT PAY ITEM NUMBER	ITEM DESCRIPTION	UNIT	QUANTITY	UNIT COST	TOTAL COST
<b>BASE BID ITEMS</b>						
1	101	1	MOBILIZATION	LS	1	\$1,136,703.07
2	102	1	MAINTENANCE OF TRAFFIC	LS	1	\$676,608.97
3	104	10	3 SEDIMENT BARRIER	LF	12737	\$43,197.10
4	104	18	3 INLET PROTECTION SYSTEM	EA	112	\$29,292
5	110	1	1 CLEARING & GRUBBING	AC	6.61	\$177,983.47
6	110	4	10 REMOVAL OF EXISTING CONCRETE	LS	8092	\$40,397
7	120	1	1 EARTHWORK	LS	1	\$54,800.00
8	180	4	1 TYPE B STABILIZATION (LBR40)(12")	SY	9794	\$25,278
9	285	709	1 OPTIONAL BASE GROUP 09 CRUSHED CONC. (10")	SY	9289	\$39,586
10	285	709	1 OPTIONAL BASE GROUP 09 ASPHALTIC BASE (B12.5)(6.5")	SY	7447	\$39,34
11	327	70	6 MILLING EXISTING ASPHALT PAVEMENT, 1 1/2" AVG DEPTH	SY	11735	\$5,69
12	334	1	53 SUPERPAVE ASPHALT CONC. TRAFFIC C, 3"	TN	2762	\$209,42
13	337	7	83 ASPHALT CONC. FRICTION COURSE, TRAFFIC C, 1 1/2" (FC-12.5, PG 76-22)	TN	2940	\$211,62
14	425	1	201 INLETS, CURB, TYPE 9, <10"	EA	37	\$10,379.44
15	425	1	205 INLETS, CURB, TYPE 9, PARTIAL	EA	19	\$11,450.67
16	425	1	331 INLETS, CURB, TYPE P-3, <10"	EA	2	\$29,213.45
17	425	1	335 INLETS, CURB, TYPE-3, PARTIAL	EA	3	\$8,130.68
18	425	1	361 INLETS, CURB, TYPE P-6, <10"	EA	8	\$14,154.64
19	425	2	41 MANHOLES, P-1, <10"	EA	2	\$3,080.18
20	425	5	41 MANHOLES, P-1, <10"	EA	1	\$3,601.79
21	425	6	41 VALVE BOX, ADJUST	EA	10	\$1,500.00
22	430	175	118 PIPE CULVERT, OPT MATL, ROUND, 18" S/CID	LF	4932	\$141.00
23	520	1	10 CONCRETE CURB & GUTTER, TYPE F	LF	12851	\$57.59
24	520	1	7 CONCRETE CURB & GUTTER, TYPE E	LF	2,109	\$57.59
25	520	2	1 CONCRETE CURB, TYPE A	LF	453	\$48.08
26	520	2	2 CONCRETE CURB, TYPE B	LF	1,029	\$54.08
27	520	2	4 CONCRETE CURB, TYPE D	LF	772	\$49.15
28	520	2	8 CONCRETE CURB, TYPE A	LF	574	\$93.33
29	520	5	11 TRAFFIC SEPARATOR CONCRETE - TYPE I, 4" WIDE	LF	703	\$145.22
30	522	1	1 CONCRETE SIDEWALK, 4" THICK	SY	11853	\$101.80
31	522	2	1 CONCRETE DRIVEWAY/RAMP, 6" THICK	SY	1879	\$150.91
32	527	2	2 DETECTABLE WARNINGS	SF	1533	\$43.11
33	700	1	11 SINGLE POST SIGN, FL, <125F	AS	65	\$608.42
34	700	1	1 SINGLE POST SIGN, REMOVE	AS	19	\$86.67
35	700	1	1 SINGLE POST SIGN, REMOVE	AS	19	\$86.67
36	706	1	1 RAISED PAVEMENT MARKER (RRM) YELLOW	EA	394	\$5.34
37	711	11	123 THERMOPLASTIC, STD, WHITE, SOLID, 12"	LF	1441	\$4.26
38	711	11	124 THERMOPLASTIC, STANDARD, WHITE, SOLID, 18" FOR DIAGONALS	LF	189	\$5.91
39	711	11	125 THERMOPLASTIC, STD, WHITE, 24"	LF	568	\$16.10
40	711	11	144 THERMOPLASTIC, STANDARD, WHITE, 2-2 DOTTED EXTENSION LINE, 12" FOR ROUNDABOUT	GM	0.6554	\$9,672.00
41	711	11	160 THERMOPLASTIC, STD, WHITE, MESSAGE OR SYMBOL	EA	1	\$269.62
42	711	11	170 THERMOPLASTIC, STD, WHITE, ARROW	EA	32	\$94.88
43	711	11	224 THERMOPLASTIC, STD, YELLOW, SOLID, 18"	GM	426	\$6.27
44	711	16	101 THERMOPLASTIC, STD, 0P, WHITE, SOLID 6"	GM	1,477	\$7,066.68
45	711	16	131 THERMOPLASTIC, STANDARD-OTHER SURFACES, WHITE, SKIP, 6" 10-30 SKIP OR 3-9 LANE DROP	GM	0.0447	\$2,351.93
46	711	16	201 THERMOPLASTIC, STD, 0P, YELLOW, SOLID 6"	GM	2.72	\$7,072.34
Contingency (15%)						\$1,804,098.53
Roadway Subtotal						\$11,831,422.03
<b>Landscape</b>						
47			SABAL PALM, SABAL PALMETTO, REFER TO PLAN FOR CT, (10'-20') BOOTED CLEAN STRAIGHT TRUNKS, REGEN HEADS	EA	30	\$495.00
48			LITTLE GEM MAGNOLIA, MAGNOLIA GRANDIFLORA/LITTLE GEM, 100 GAL., 4" CAL., 8" MIN HT.	EA	9	\$1,375.00
49			DAKHOON HOLLY, ILEX CASASIE, 65 GAL., 3" CAL., 8" MIN. HT., 3" SPRD.	EA	3	\$375.00
50			BALD CYPRESS (N); TAXODIUM DISTICHUM, 100 GAL., 4" CAL., 10" MIN. HT., 3" SPRD.	EA	3	\$760.00
51			LIVE OAK, QUERCUS VIRGINIANA, 100 GAL., 4" CAL., 4" MIN. HT., 6" SPRD.	EA	5	\$2,100.00
52			CANYON GORGON FAN PALM, LIVISTONIA NITIDA, 18" CAL., FLRT, CLEAN STRAIGHT HEADS	EA	12	\$1,100.00
53			SYLVESTER DATE PALM, PHOENIX SYLVESTRIS, 16" OA, CLASSIC CUT, CLEAN STRAIGHT TRUNK, SYMMETRICAL HEADS...	EA	9	\$3,000.00
54			PETITE PINK OLEANDER, NEROLIUM OLEANDER 'PETITE PINK', 3 GAL., 18" HT., 12" SPRD., 30" O.C.	EA	76	\$20.00
55			MUSKOGEE CRAPE MYRTLE, LAGERSTROEMIA INDICA 'MUSKOGEE', 100 GAL., 4" CAL., 8" MIN. HT., STD. TRUNK	EA	22	\$1,031.00
56			NATCHEZ CRAPE MYRTLE, LAGERSTROEMIA INDICA 'NATCHEZ', 100 GAL., 4" CAL., 8" MIN. HT., STD. TRUNK	EA	6	\$1,031.00
57			SWEETBAY MAGNOLIA (N); MAGNOLIA VIRGINIANA, 65 GAL., 3" CAL., 8" MIN. HT., STD. TRUNK	EA	12	\$1,375.00
58			DD BLANCHARD MAGNOLIA, MAGNOLIA GRANDIFLORA, 'DD BLANCHARD', 100 GAL., 4" CAL., 10" MIN. HT., FULL TO GROUND	EA	1	\$1,240.00
59			LILY OF THE NILE, AGAPANTHUS AFRICANUS, 1 GAL., FULL, 3 PPP, 24" OC	EA	1856	\$19.25
60			BLUE DAZE, EVOULVULUS GLOMERATUS, 1 GAL., 4" HT., 6" SPRD., 15" OC	EA	449	\$14.50
61			THRYSALLIS, GALPHIMIA GRAECIS, 3 GAL., 7" HT., 14" SPRD., 30" O.C.	EA	86	\$16.50
62			RADICANS GARDENIA, GARDENIA JASMINOIDES 'RADICANS', 3 GAL., 7" MIN. HT., 18" OC	EA	831	\$20.00
63			DWARF FIREBUSH, HAMELIA PATENS, 3 GAL., 18" HT., 9" SPRD., 30" OC	EA	456	\$20.00
64			DWARF YALPOUN HOLLY (N); ILEX VOMITORIA, 3 GAL., 7" HT., 14" SPRD., 30" O.C.	EA	268	\$12.00
65			MAUI RED IKORA, IKORA MAUI, 3 GAL., 15" HT., 12" SPRD., 36" OC	EA	206	\$16.50
66			TEXAS SAGE, LEUCOPHYLLUM FRUTICOSUS, 3 GAL., 18" HT., 12" SPRD., 36" O.C.	EA	158	\$14.50
67			SIMPSON'S STOPPER (N); MYRTICANTHUS FRAGRANS, 3 GAL., 18" HT., 12" SPRD., 36" O.C.	EA	481	\$14.50
68			MUNLY GRASS (N); MUHLBERGIA CAPILLARIS, 3 GAL., 15" MIN. HT., 10" SPRD., 36" O.C.	EA	1238	\$14.50
69			BECK'S LOVE GRASS, ERAGROSTIS ELLIOTTI, 3 GAL., 8" HT., 8" SPRD., 24" OC	EA	416	\$14.50
70			BLUE DAZE, EVOULVULUS GLOMERATUS, 1 GAL., 4" HT., 6" SPRD., 15" O.C.	EA	344	\$8.50
71			VARIGATED CONFEDERATE JASMINE, TRACHELOSPERMUM JASMINOIDES 'VARIEGATUM', 3 GAL., 12" HT., 12" SPRD., BUSH FORM, 24" OC	EA	816	\$15.00
72			BLACK EYED RUSSIAN JASMINE, TRACHELOSPERMUM JASMINOIDES '18" O.C.	EA	26	\$18,846.00
73			BAND CORDGRASS, SPARTINA BAKERI, 3 GAL., 15" HT., 10" SPRD., 30" O.C.	EA	49	\$14.50
74			ORANGE BIRD OF PARADISE, STRELITZIA REGINAE, 7 GAL., 24" HT., 24" SPRD., 36" OC	EA	141	\$97.00
75			VARIGATED CONFEDERATE JASMINE, TRACHELOSPERMUM JASMINOIDES 'VARIEGATUM', 3 GAL., 12" HT., 12" SPRD., BUSH FORM, 24" OC	EA	1007	\$13.75
76			WALTER'S VIBURNUM, VIBURNUM OBOVATUM, 3 GAL., 18" HT., 12" SPRD., 36" OC	EA	251	\$14.50
77			COONITE, ZAMIA PUMILA, 3 GAL., 15" HT., 10" SPRD., 36" O.C.	EA	704	\$35.00
78			ARGENTINE BAHIA SOD, PASCUALIUM NOTATUM ARGENTINE, SOLID SOD, CONTRACTOR TO VERIFY QTY.	SF	110618	\$1.60
79			ROOT BARRIER, DEEP ROOT 2B24	LF	1208	\$20.00
80			MULCH, 3" SHREDDED HARDWOOD	CY	498	\$175.00
81			IRRIGATION	LS	1	\$160,123.00
82			BLACK MEXICAN BEACH PEBBLES, 3"-5" OVER NON-WOVEN GEOTEXTILE FABRIC	SF	1708	\$19.00
Contingency (15%)						\$114,166.19
Landscape Subtotal						\$975,274.14
<b>UTILITIES</b>						
83			FURNISH AND INSTALL 12" WM	LF	3356	\$250.00
84			FURNISH AND INSTALL 12" 11.25 DEGREE BENDS	EA	4	\$2,200.00
85			FURNISH AND INSTALL 12" 22.5 DEGREE BENDS	EA	3	\$2,200.00
86			FURNISH AND INSTALL 12" 45 DEGREE BEND	EA	1	\$35,000.00
87			FURNISH AND INSTALL 12"x6" TEE	EA	3	\$1,750.00
88			FURNISH AND INSTALL 12"x8" TEE	EA	2	\$2,000.00
89			FURNISH AND INSTALL 12" TEE	EA	2	\$3,000.00
90			FURNISH AND INSTALL 6" GATE VALVE (WATER MAIN)	EA	3	\$5,500.00
91			FURNISH AND INSTALL 12" GATE VALVE	EA	5	\$7,500.00
92			FURNISH AND INSTALL 8" TAPPING SLEEVE AND VALVE	EA	1	\$11,500.00
93			FURNISH AND INSTALL 12" TAPPING SLEEVE AND VALVE	EA	2	\$18,450.00
94			FURNISH AND INSTALL 8" LINE STOP	EA	1	\$11,500.00
95			FURNISH AND INSTALL 8" CAP	EA	1	\$700.00
96			FURNISH AND INSTALL 12" CAP	EA	2	\$750.00
97			FURNISH AND INSTALL 12" X 10" REDUCER	EA	1	\$1,500.00
98			FURNISH AND INSTALL FIRE HYDRANT	EA	7	\$5,000.00
99			FURNISH AND INSTALL SERVICE LINE	EA	2	\$5,000.00
100			ABANDON/REMOVE EXISTING 4" AC WATER MAIN	LF	1377	\$50.00
101			REMOVE AND DISPOSE OF EXISTING 2" WM	LF	62	\$30.00
102			REMOVE AND DISPOSE OF EXISTING 8" WM	LF	189	\$60.00
103			REMOVE AND DISPOSE OF EXISTING 10" WM	LF	17	\$60.00
104			REMOVE AND DISPOSE OF EXISTING 12" WM	LF	3106	\$65.00
105			REMOVE EXISTING FIRE HYDRANT ASSEMBLY	EA	4	\$2,875.00
106			FURNISH AND INSTALL 6" RW	LF	96	\$175.00
107			FURNISH AND INSTALL 8" RW	LF	4628	\$225.00
108			FURNISH AND INSTALL 8" 11.25 DEGREE BENDS	EA	12	\$600.00
109			FURNISH AND INSTALL 8" 22.5 DEGREE BENDS	EA	2	\$600.00
110			FURNISH AND INSTALL 8" 45 DEGREE BENDS	EA	10	\$600.00
111			FURNISH AND INSTALL 8"x6" TEE	EA	1	\$600.00
112			FURNISH AND INSTALL 6" GATE VALVE (RW)	EA	1	\$5,500.00
113			FURNISH AND INSTALL 8" GATE VALVE	EA	4	\$6,000.00
114			FURNISH AND INSTALL 8" X 6" REDUCER	EA	1	\$1,200.00
115			FURNISH AND INSTALL 6" CAP/PLUG	EA	1	\$550.00
116			CONNECT TO EXISTING 8" RW	EA	3	\$3,000.00
117			FURNISH AND INSTALL 8" GRAVITY MAIN	LF	4036	\$200.00
118			FURNISH AND INSTALL MANHOLE (<8 FT depth) (Sanitary Sewer)	EA	3	\$12,000.00
119			FURNISH AND INSTALL MANHOLE (>8 FT depth) (Sanitary Sewer)	EA	10	\$15,000.00
120			CORE DRILL EXISTING MANHOLE (>8 FT depth) (Sanitary Sewer)	EA	2	\$500.00
121			FURNISH AND INSTALL 4" PVC FM	LF	1262	\$150.00
122			FURNISH AND INSTALL 4" 45 DEGREE BEND	EA	8	\$400.00
123			BYPASS PUMPING	LS	1	\$10,000.00
124			FURNISH AND INSTALL NEW LIFT STATION	LS	1	\$470,000.00
Contingency (15%)						\$683,559.00
UTILITIES SUB-TOTAL						\$5,240,619.00
<b>GRAND TOTAL</b>						<b>\$17,647,315.17</b>

## Schedule for S. Bluford Ave. Complete Street Project - Phase 1

	Activity Name	Duration (Work Days)	Start Date	Finish Date	Predecessors	Successors	2023	2024						
							December	January	February	March	April	May	June	July
1	60% Plans Preparation	40.00	12/12/23	2/5/24		2								
2	City 60% Review	14.00	2/6/24	2/23/24	1	3, 4, 5, 6								
3	90% Plans Preparation	30.00	2/26/24	4/5/24	2	7								
4	Utility Coordination	30.00	2/26/24	4/5/24	2	7								
5	SJRMWD Permitting	30.00	2/26/24	4/5/24	2	7								
6	Duke Energy Coordination	30.00	2/26/24	4/5/24	2	7								
7	City 90% Review	14.00	4/8/24	4/25/24	3, 4, 5, 6	8								
8	100% Plans Preparation	14.00	4/26/24	5/15/24	7	9								
9	100% City Review	14.00	5/16/24	6/4/24	8	10								
10	Final Plans Submittal	14.00	6/5/24	6/24/24	9									
							December	January	February	March	April	May	June	July

## Schedule for S. Bluford Ave. Complete Street Project - Phase 2

	Activity Name	Duration (Work Days)	Start Date	Finish Date	Predecessors	Successors	2023	2024												2025					
							December	January	February	March	April	May	June	July	August	September	October	November	December	January					
1	60% Plans Preparation	45.00	12/12/23	2/12/24		2																			
2	City 60% Review	30.00	2/13/24	3/25/24	1	3, 4, 5, 6																			
3	90% Plans Preparation	30.00	3/26/24	5/6/24	2	7																			
4	Utility Coordination	60.00	3/26/24	6/17/24	2	7																			
5	SJRMWD Permitting	90.00	3/26/24	7/29/24	2	7																			
6	Duke Energy Coordination	90.00	3/26/24	7/29/24	2	7																			
7	City 90% Review	30.00	7/30/24	9/9/24	3, 4, 5, 6	8																			
8	100% Plans Preparation	30.00	9/10/24	10/21/24	7	9																			
9	100% City Review	14.00	10/22/24	11/8/24	8	10																			
10	Final Plans Submittal	14.00	11/11/24	11/28/24	9																				
							December	January	February	March	April	May	June	July	August	September	October	November	December	January					

# Schedule for S. Bluford Ave. Complete Street Project - Phase 3

	Activity Name	Duration (Work Days)	Start Date	Finish Date	Predecessors	Successors	2024												2025			
							January	February	March	April	May	June	July	August	September	October	November	December	January	February	March	April
1	Kick-Off Meeting	1.00	1/1/24	1/1/24		2, 3, 4																
2	Geotechnical Report	60.00	1/2/24	3/25/24	1	5																
3	60% Plans Preparation	90.00	1/2/24	5/6/24	1	5																
4	Boundary Surveys & Title Searches	90.00	1/2/24	5/6/24	1	11																
5	City 60% Review	30.00	5/7/24	6/17/24	2, 3	6, 7, 8, 9																
6	90% Plans Preparation	60.00	6/18/24	9/9/24	5	10																
7	Utility Coordination	60.00	6/18/24	9/9/24	5	10																
8	SJRMWD Permitting	90.00	6/18/24	10/21/24	5	10																
9	Duke Energy Coordination	90.00	6/18/24	10/21/24	5	10																
10	City 90% Review	30.00	10/22/24	12/2/24	6, 7, 8, 9	11																
11	100% Plans Preparation	30.00	12/3/24	1/13/25	4, 10	12																
12	100% City Review	14.00	1/14/25	1/31/25	11	13																
13	Final Plans Submittal	14.00	2/3/25	2/20/25	12																	
							January	February	March	April	May	June	July	August	September	October	November	December	January	February	March	April